



GLOBAL EVENT

JOHANNESBURG SOUTH AFRICA



SHOWCASING RESULTS AND DEMONSTRATING IMPACT

Subject 3 - Delivery: Demonstrating integrated impacts at national level



TRANSLATIONAL AGRICULTURE

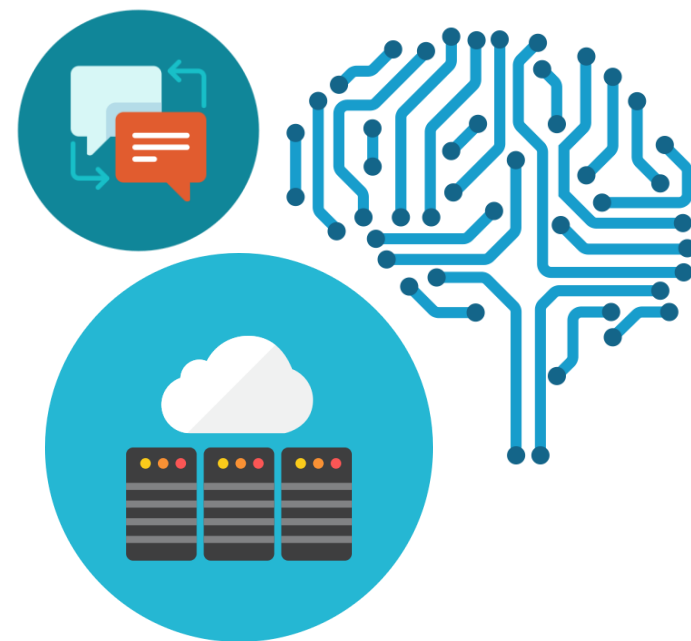
DATA AND KNOWLEDGE NEEDS TO ACCELERATE INNOVATION AND IMPACT

Jawoo Koo (IFPRI)



Hey Cigi, when should I plant my maize?

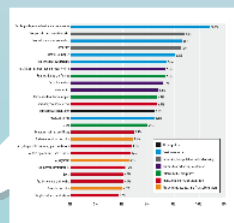
- Real-time **decision support system** for farmers
- Easy **natural language** as an interface
- Smart **artificial intelligence** trained by CGIAR and partners
- Leveraging open, **harmonized and interoperable** multiple databases



agriculture,
forestry & fisheries
Department:
Agriculture, Forestry and Fisheries
REPUBLIC OF SOUTH AFRICA



#1 Open Access Open Data



... ("CGIAR IA Principles"), which is the CGIAR Principles on the Management of Intellectual Property expands on Article 6.1 of the CGIAR IA Principles which provides that "The Consortium and the Centers shall promptly and broadly disseminate their research results, subject to confidentiality as [patents, etc.]."

2. Scope and implementation

This Policy was approved by the CGIAR Consortium on October 2, 2013 and is effective as of this date (the "effective date"). Implementation of and compliance with this Policy, by the Consortium, its members and their partners within the...

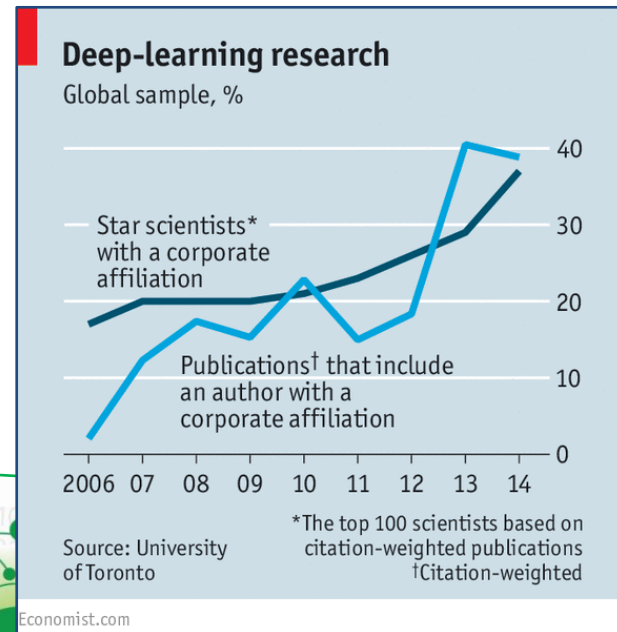
transition period runs from the effective date of the Policy for an initial period of 5 years, with comprehensive implementation by the end of 2018. This Policy should be read in conjunction with the

... products ("information products") to Open Access to the following indicative types of information products: peer-reviewed journal articles; reports and other papers; books and book chapters; data and databases; data collection and analysis tools (e.g. models and survey tools); videos, audio and images; computer software; web services (e.g. data portals, modeling on-line platforms); and metadata associated with the information products above.

Credit: Tim Berners-Lee

#2 Collaborative Partnerships

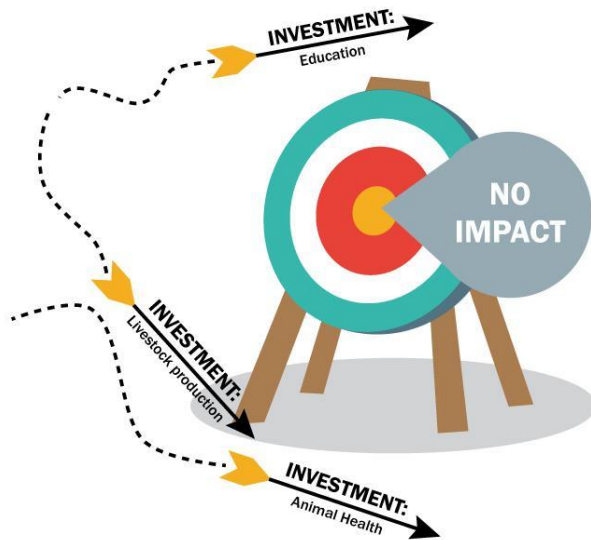
- PPP, **Public-Private Partnership**, is the key: data, tools, and analytics
- Coordination platform to provide **enabling environment**
- Allowing researchers to explore ~~crazy~~ creative **blue-sky** ideas



#3 Information Platform

With Good Decision Support Analysis and a Clear Relationship Between **INPUTS > IMPACT** We Can Better Target Investments

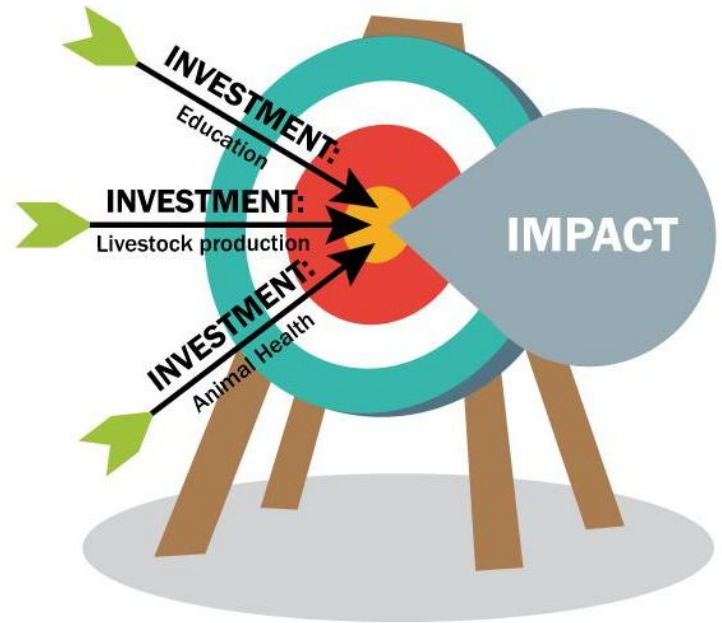
Without Decision Support Analysis




random analytics
Uninformed use of analytics


random metrics
Which metrics?


random data
What evidence?




better analytics
Prediction + estimation models, impact assessment tools


better metrics
Rationale for selection of indicators


better data
Evidence base

#4 Data-driven decision making

Data vs Gut



DATA

→ INSIGHTS

→ DECISION

→ IMPACT

Transformational!

#5 *Satisfaction Guaranteed*

- Robust science and data **quality assurance protocols** to be in place
- Be more **serious** about engaging with farmers and synthesizing insights
- Stake is high: **one research cycle** left*

